

PROMOTING CIRCULAR ECONOMY AND THE ROLE OF CENTERS OF EXCELLENCE

Organized by the U.S. Environmental
Protection Agency

June 23, 2020



WEBEX REVIEW

- Webinar is being recorded
- Audio options:
 - Join by computer
 - WebEx “Call Me” feature
 - Call in: 1-415-655-0002 (U.S.); event number: 161 648 1860
- Ask questions via the question and answer box



WEBINAR OVERVIEW

- Introduction by CCAC Waste Initiative and U.S. Environmental Protection Agency
- Overview of centers of excellence by panelists
- Facilitated discussion

TODAY'S SPEAKERS

- Hosts
 - Sandra Mazo-Nix, Climate and Clean Air Coalition Waste Initiative
 - Tom Frankiewicz, U.S. Environmental Protection Agency
- Panelists
 - Dr. Mohab Ali Al-Hinai, Environmental Center of Excellence, Oman Environmental Services Holding Company (be'ah)
 - Prof. Hossain Sahadat, Solid Waste Institute for Sustainability
 - Prof. Goran Vujic, Center of Excellence for Circular Economy
- Moderators
 - Chris Godlove, THINKcities
 - Marija Bogdanovic, DKTI CSWM Serbia, Deutsche Gesellschaft für Internationale Zusammenarbeit (GIZ)





CLIMATE & CLEAN AIR COALITION

TO REDUCE SHORT-LIVED
CLIMATE POLLUTANTS



- The Climate & Clean Air Coalition is a global, voluntary partnership dedicated to addressing short-lived climate pollutants
- Network of 400+ governments, IGOs, financial institutions & civil society organisations

MUNICIPAL SOLID WASTE INITIATIVE

Mitigating short-lived climate pollutants (SLCPs) from municipal solid waste

Objective

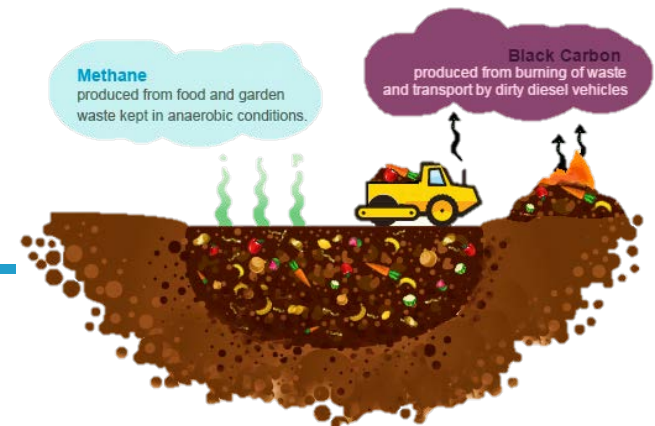
Reduce emissions of SLCPs across the municipal solid waste sector by providing cities and countries

- Comprehensive package of tools & resources
- Training and capacity building
- Opportunities for information exchange
- MSW Knowledge Platform

to facilitate the design and implementation of locally appropriate actions.

Areas of Focus

- Organic waste diversion
- Landfill gas capture and use
- Preventing open burning of waste



Contact: Sandra MAZO-NIX - sandra.mazo-nix@un.org

More information

MSW Knowledge Platform: waste.ccacoalition.org

CCAC Waste Initiative webpage: ccacoalition.org/en/news/municipal-solid-waste-

U.S. ENVIRONMENTAL PROTECTION AGENCY

- EPA primarily domestic regulatory agency but supports bi- & multi-lateral cooperation through interagency agreements and multi-lateral partnerships
- EPA supporting methane and SLCP reductions through the Global Methane Initiative and CCAC
- Assistance ranges from direct technical assistance, tool and model development, and documentation, dissemination of best practices – more recently through fostering and support of centers of excellence

Contact:

Tom Frankiewicz, Lead – International
Biogas Programs
Frankiewicz.Thomas@epa.gov



Oman Environmental Services Holding Company (*be'ah*)
ENVIRONMENTAL CENTER OF EXCELLENCE (ECE)

Mohab Ali Al-Hinai, Ph.D.
Head of Environmental Center of Excellence

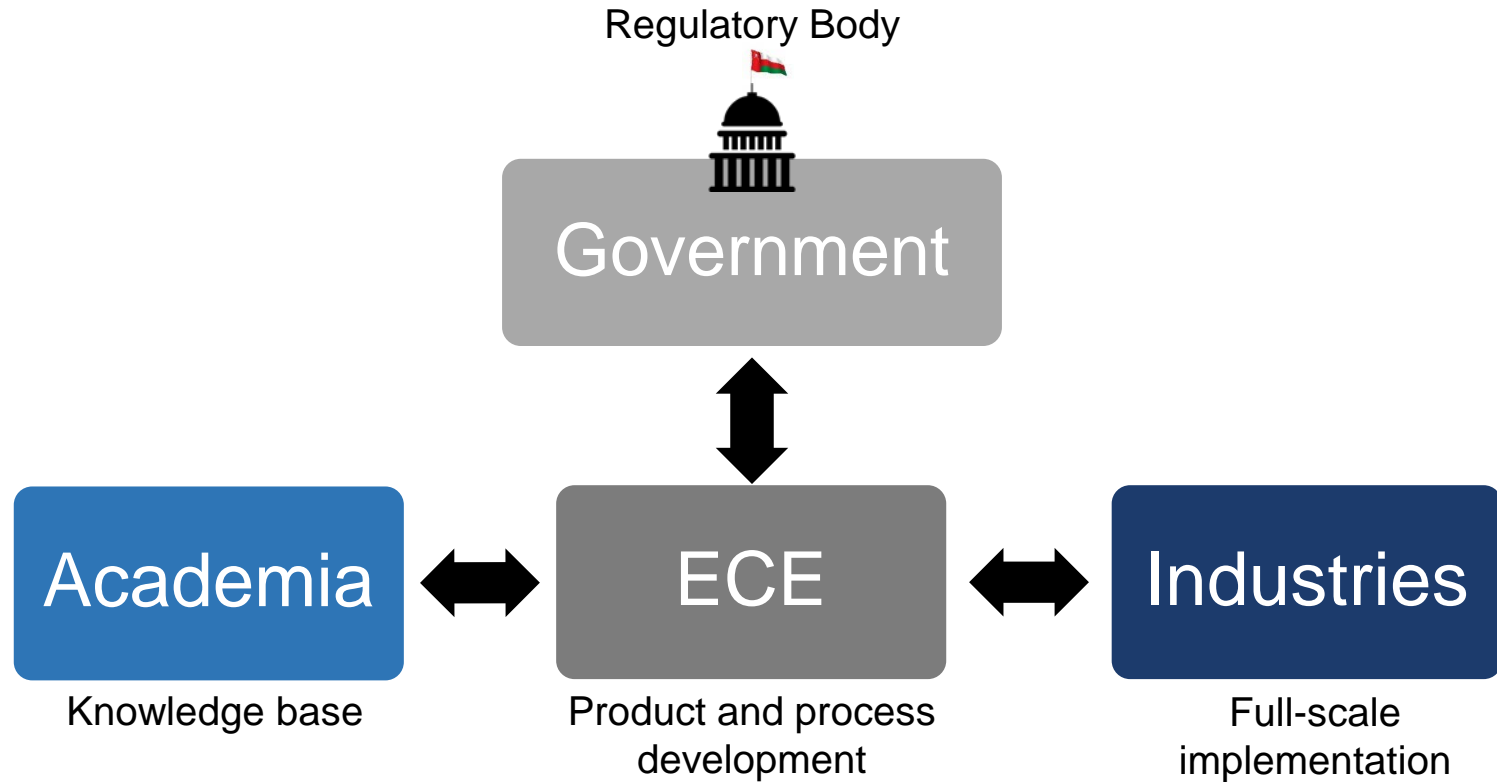


WHY DO WE NEED A ECE

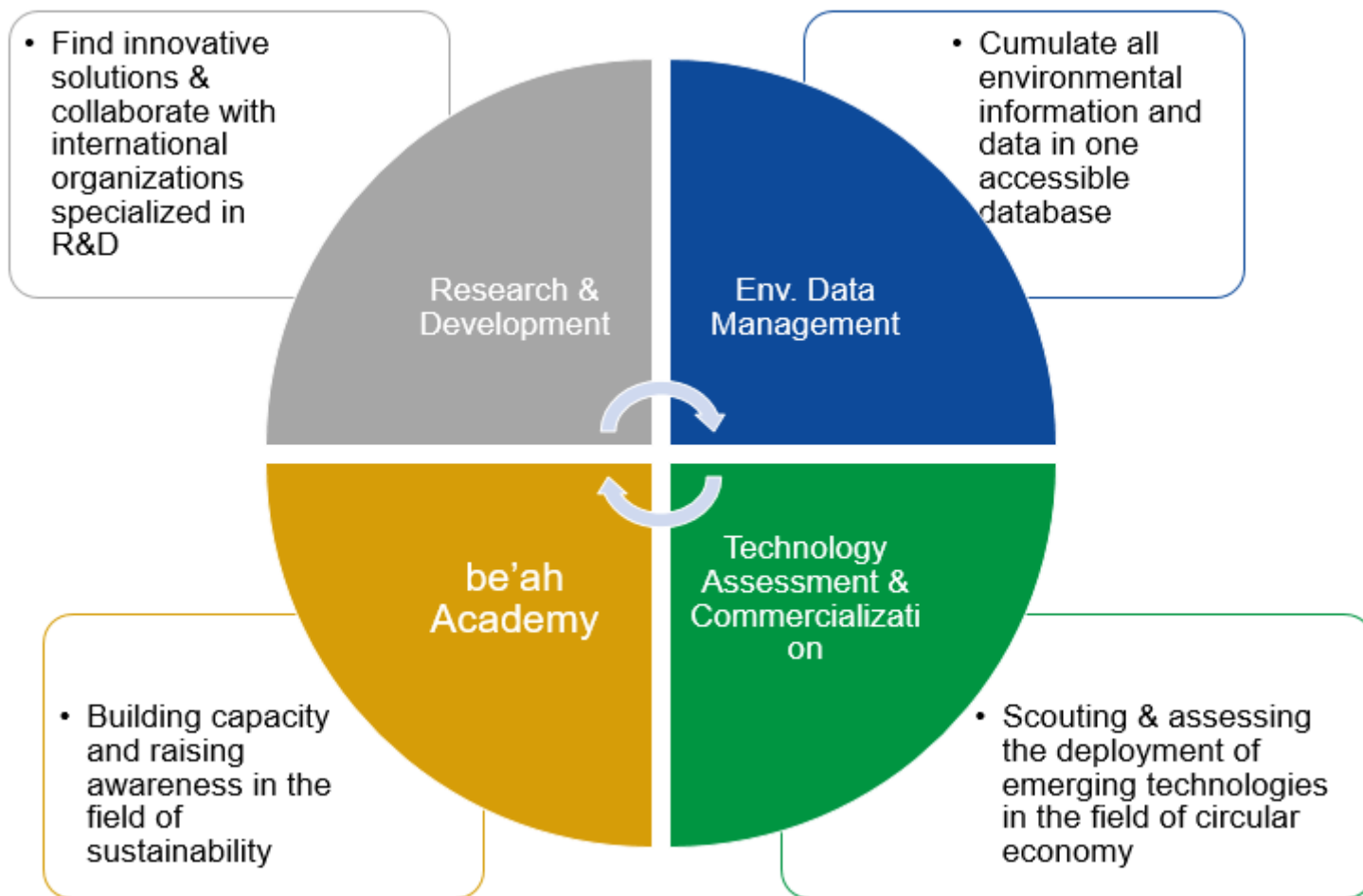
- To elevate the position of sustainability in Oman
- The ECE achieves this through different mediums:
 - Raising awareness about sustainable issues
 - Building capacity
 - Carrying out research into upcoming innovative solutions
 - Facilitating collaboration between organizations in various entities and fields



ECE: RESEARCH AND TECHNOLOGY ORGANIZATION (RTO)



ECE: DEPARTMENTS





Fighting Coronavirus Boredom – Slim Down during Lock Down – 30 Days Program

- MD. Sahadat Hossain, Ph.D., P.E.
- Director, Solid Waste Institute for Sustainability
 - Professor, Department of Civil Engineering
 - University of Texas at Arlington

Green Opportunities
 BOOSTING SUSTAINABILITY IN A
 POST-PANDEMIC PLANET
 CAPITALIZING ON CLIMATE CHANGE
 MITIGATION POST COVID

LET'S DISRUPT

“Amount of COVID 19 waste, both medical and household waste, is surging and government and city officials need to evaluate sustainable waste collection and management system to ensure public health and safety.”

Dr. Sahadat Hossain
 DIRECTOR
 SOLID WASTE INSTITUTE FOR SUSTAINABILITY
 & PROFESSOR OF CIVIL ENGINEERING
 The University of Texas at Arlington

panelist

BACKGROUND
 Professor of Civil Engineering and Director of Solid Waste Institute for Sustainability (SWIS) at University of Texas, Arlington

HIGHLIGHTS
 Focus on sanitation, cleanliness, and hygiene will lead to business opportunities for sustainable waste collection and processing.

Organizers

#THINKBEYOND



Global Experience – ISWA SWIS Winter School

85 Countries in 5 Years



- ❑ Developing Future Leaders
- ❑ Creating Intercultural and Global Experiences



ISWA INFORMATION

Visit www.iswa.org for more information

Two of the recipients of the 2020 Scholarship share their experiences of Texas



SIDDARTHA VALLE FROM UNIVERSITY OF BATANGAS, PHILIPPINES

I had the privilege to participate in this year's Winter School on Solid Waste Management, a programme jointly organised by the International Solid Waste Association (ISWA) and the Solid Waste Institute for Sustainability (SWIS) of the University of Texas at Arlington.

The objective of the ISWA-SWIS Winter School was to provide advanced knowledge in the field of waste management to an international audience of existing and emerging solid waste experts. For two weeks, participants had the opportunity to gain knowledge on the challenges of solid waste management, with a focus on developing economies, through a blend of in-class and hands-on training. This year, the Winter School involved formal classroom lectures given by SW professionals and academicians, visits to landfills and MRF, and hands-on equipment operation.

As an academic of engineering from a developing country, there are plenty of concepts familiar to me in theory but not in practice, as there has been little to no infrastructure for sustainable waste management that we can study and observe, e.g. sanitary landfills or well-designed MRFs. So I am immensely grateful for the opportunity to learn from seasoned solid waste managers. It has truly been an enriching experience for me.

The Winter School was also organised in coordination with the following:

- City of Irving Landfill, Texas
- City of Garland, Texas
- City of Grand Prairie, Texas
- Republic Services, Fort Worth, Texas

My participation at the Winter School was made possible through a scholarship grant from ISWA-SWIS. I am deeply honoured to have been chosen to participate in the programme.

PAOLA NATHALI MEZA RAMOS. ORIGINALLY FROM PERU, PAOLA IS AN MA STUDENT AT THE AUTONOMOUS UNIVERSITY OF MADRID, SPAIN.

ISWA-SWIS offered me the opportunity to participate in the Winter School held at the University of Texas at Arlington. The participants were made up of professionals in waste management from 26 different countries. The diversity of the participants and the shared interest in waste management made us connect immediately; different realities with a common problem, inadequate waste management.

The programme included theoretical classes by leading professionals, experts in the area, as well as group work in specific cases to reinforce the concepts learned throughout the classes.

My group was formed by Abraham from the United Kingdom, Daniana from Colombia, Daniel from the United Kingdom, Eshetu from Ethiopia, Maria from Bangladesh, Mohammed from



Global Projects – Africa / Asia



THE UNIVERSITY OF TEXAS AT ARLINGTON

SUSTAINABLE SOLID WASTE ENGINEERING AND MANAGEMENT PROGRAM
1 YEAR MS PROGRAM

The Solid Waste Institute of Sustainability (SWIS) at the University of Texas at Arlington is now offering Sustainable Solid Waste Engineering and Management (SSWEM) program. SSWEM is an interdisciplinary program which combines the Engineering, Social Science, Business Management, Public Administration, Planning and Sustainability with the objective of protecting human health, environment, and the potential economic impact of waste management on society.

PROGRAM DETAILS
<http://www.uta.edu/swis-Degree-Program.html>

APPLY NOW!!
<https://www.uta.edu/admissions/apply>

MASTERS PROGRAMS

- Masters of Science
- Masters of Engineering
- Masters of Management

DOCTORAL PROGRAMS

- Contact program coordinator for degree requirement and completion time

Program Coordinator
Dr. Saadul Hossain, Ph.D., P.E.
Director, Solid Waste Institute of Sustainability
Professor, Department of Civil Engineering
Box 15330, The University of Texas at Arlington
Arlington, Texas 76019
Tel: (817)-272-3877
Fax: (817)-272-3839
Email: hossain@uta.edu

CENTER OF EXCELLENCE FOR CIRCULAR ECONOMY AND CLIMATE CHANGE

Based in Novi Sad, Serbia

Established in April 2019

- SeSWA, GIZ, USEPA

Dr. Goran Vujic, Director

Contact: goranvujic@uns.ac.rs
www.centercecc.org



CENTER OF EXCELLENCE FOR CIRCULAR ECONOMY AND CLIMATE CHANGE

Mission – Introduction and implementation of CE and CC mitigation actions in the waste sector

Services offered:

- Education
- Consultancy
- Data analysis
- Professional training



CENTER OF EXCELLENCE FOR CIRCULAR ECONOMY AND CLIMATE CHANGE

Previous experience:

- USEPA grants
- GIZ projects
- CCAC projects
- Local, regional and national projects

Ongoing projects:

- Food Shifters
- Novi Sad Composting plant



FACILITATED DISCUSSION

Moderators

- Marija Bogdanovic, GIZ Serbia
- Chris Godlove, THINKcities



FACILITATED DISCUSSION

- How do Circular Economy (CE) concepts fit into waste management within the regions represented?
- What is current status of implementation of CE in the regions?
- What is the role of Centers of Excellence in facilitating this transition?
- What mechanisms can Centers use to engage with government, academia, private sector?
- How can Centers navigate managerial and financial sustainability?
- What role can CoEs play in helping local officials to navigate the Covid crisis and what are the opportunities for incorporating CE into Building Back Better approaches in the future?
- How can CoEs anticipate a crisis response focus (Covid, natural disaster) and what role do Centers have in supporting the implementation of this response?

ORGANIZING PARTNER WEBPAGES

- Climate and Clean Air Coalition: <https://ccacoalition.org/en>
- Deutsche Gesellschaft für Internationale Zusammenarbeit: <https://www.giz.de/en/html/index.html>
- U.S. Environmental Protection Agency: <https://www.epa.gov/>
- Solid Waste Institute for Sustainability: <https://swis.uta.edu/>
- Be'ah Environmental Center of Excellence: <https://www.beah.om/Other/Sustainability>
- Center of Excellence for Circular Economy and Climate Change: <https://centercecc.org/>

THANK YOU FOR ATTENDING!

Webinar recording will be made available on the CCAC Municipal Solid Waste Knowledge Platform:

<https://www.waste.ccacoalition.org/>