



**CLIMATE &
CLEAN AIR
COALITION**
TO REDUCE SHORT-LIVED
CLIMATE POLLUTANTS

Policy instruments for Municipal Solid Waste Management (SWM)

Sylvia Aguilar, CEGESTI



Sinergias para el Desarrollo Sostenible - Synergies for Sustainable Development

Copyright CEGESTI 2016 – www.cegesti.org

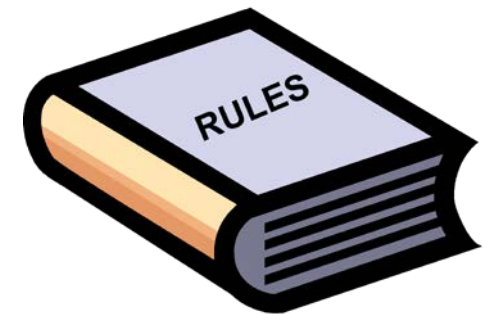
Elements of a municipal waste solid management system (MSWM)

A comprehensive MSWM system includes:

- setting policies;
- developing and **enforcing regulations**;
- planning and evaluating municipal MSWM activities;
- using waste characterisation studies to adjust systems to the types of waste generated;
- physically handling waste and recoverable materials, including separation, collection, composting, incineration, and landfilling;
- **marketing recovered materials** to brokers or to end-users for industrial, commercial, or smallscale manufacturing purposes;
- establishing **training programs** for MSWM workers;
- carrying out public information and education programs;
- identifying **financial mechanisms** and cost recovery systems;
- establishing **prices for services**, and creating incentives;
- managing public sector administrative and operations units; and
- incorporating private sector businesses, including informal sector collectors, processors, and entrepreneurs.

Elements of a municipal waste solid management system (MSWM)

Some elements are “popular” Some not so much...



The MSW regional average collection rate in LAC is 89.9% (as a percentage of the population). Compared with a worldwide average of 73.6%, LAC has a high level of coverage, reflecting the priority the region gives to this service (<https://publications.iadb.org/handle/11319/7177>) However...

<http://www.atlas.d-waste.com/>

WASTE ATLAS™

Powered by
D-WASTE™
waste management
for everyone

Partners

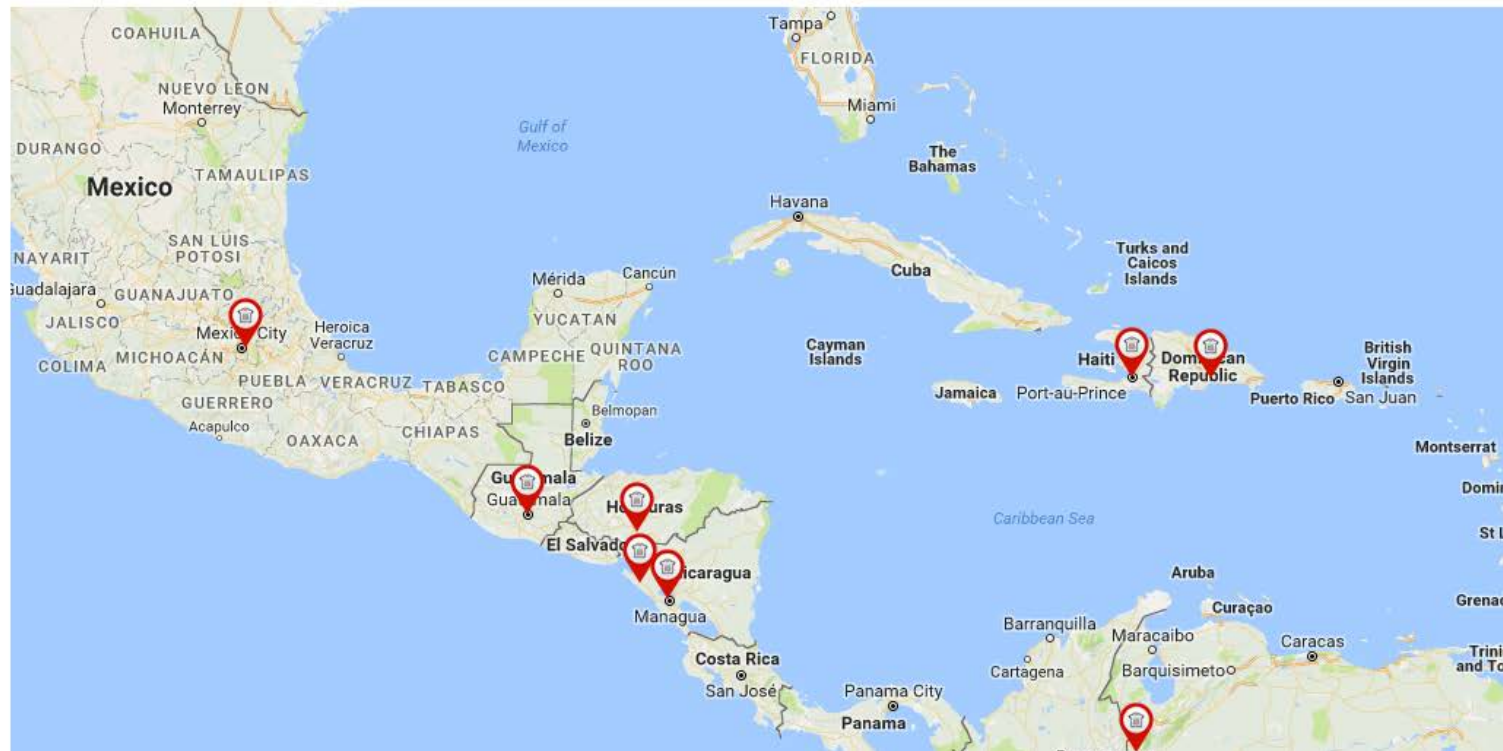


- Dumpsites
- Sanitary Landfills
- MBT
- WtE
- Biological Treatment

Available on the
App Store

Get it on
Google play

Like Share 13



Solid waste management hierarchy

Refuse

Reduce

Reuse

Recycle

Recover

Dispose

Prevent the production of waste, or reduce the amount generated.

Reduce the toxicity or negative impacts of the waste that is generated.

Reuse in their current forms the materials recovered from the waste stream.

Recycle, compost, or recover materials for use as direct or indirect inputs to new products. Recover energy by incineration, anaerobic digestion, or similar processes.

Reduce the volume of waste prior to disposal.

Dispose of residual solid waste in an environmentally sound manner,

Economic instruments	Regulating and monitoring instruments	Social instruments
To encourage (or discourage) specific actions and behaviors	To manage or prohibit practices (usually those that impact public health and the environment)	To inform, interact and engage



It is necessary to have regulations that define:

- The responsibility and authority of the various actors, including the financial responsibility: the generators (whether domiciliary, commerce, industry), the waste managers (those who are responsible for collecting, transporting and final disposal), the producers (or importers), and the various levels of Government (and thus avoid contradictory and duplicate mandates).
- Norms to regulate sanitary / environmental management of hazardous and non-hazardous waste.
- The operating parameters for the waste management facilities, so as to protect the health and the environment.
- Fines and penalties in case of non-compliance.
- The power (and obligation) to apply economic instruments, as well as the obligation to implement social instruments.

The regulations in Costa Rica



National instruments for SWM

Policy

Law

Planning / Strategy

**National
Waste
Management
Policy**

**Integrated
waste
management
Law (Law
N°8839, from
2010)**

Decrees

**National
Development
Plan
2015-2018**

(1.10 National
Program for
Protection and
Recovery of the
Human Environment,
result "Solid wastes
managed integrally")

Waste National Plan

Municipal Plans for SWM

Sectoral plans for waste

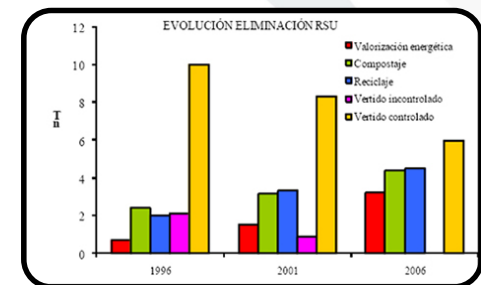
Waste plans by generators

Institutional Environmental Management
Programs

National Strategy for Separation and
Recovery of Waste

Integrated waste management Law (Law N°8839)

- **Objet (Art 1)**
 - Regulate the IWM and the efficient use of resources, through the planning and execution of regulatory, operational, financial, administrative, educational, environmental and health monitoring and evaluation actions



General principles (Art 5)

Shared responsibility

- IWM requires the joint, coordinated and differentiated participation of all producers, importers, distributors, consumers, waste managers, both public and private.

Extended Producer Responsibility

- Producers or importers are responsible for the product during its entire life cycle, including the post-industrial and post-consumption phases.
- For purposes of this Law, this principle will only apply to waste of special handling.

Internalization of costs

- It is the responsibility of the generator of the waste the integral and sustainable management of these, as well as to assume the costs that this implies in proportion to the quantity and quality of the waste that it generates.

Prevention at the source

- The generation of waste must be prevented as a priority at the source.

General principles (Art 5)

Precautionary

- When there is a danger of serious or irreversible damage, the lack of absolute scientific certainty should not be used as a reason to postpone the adoption of cost-effective measures to prevent environmental or health degradation.

Access to information

- All people have the right to access information held by public institutions and municipalities about waste management.

Duty to inform

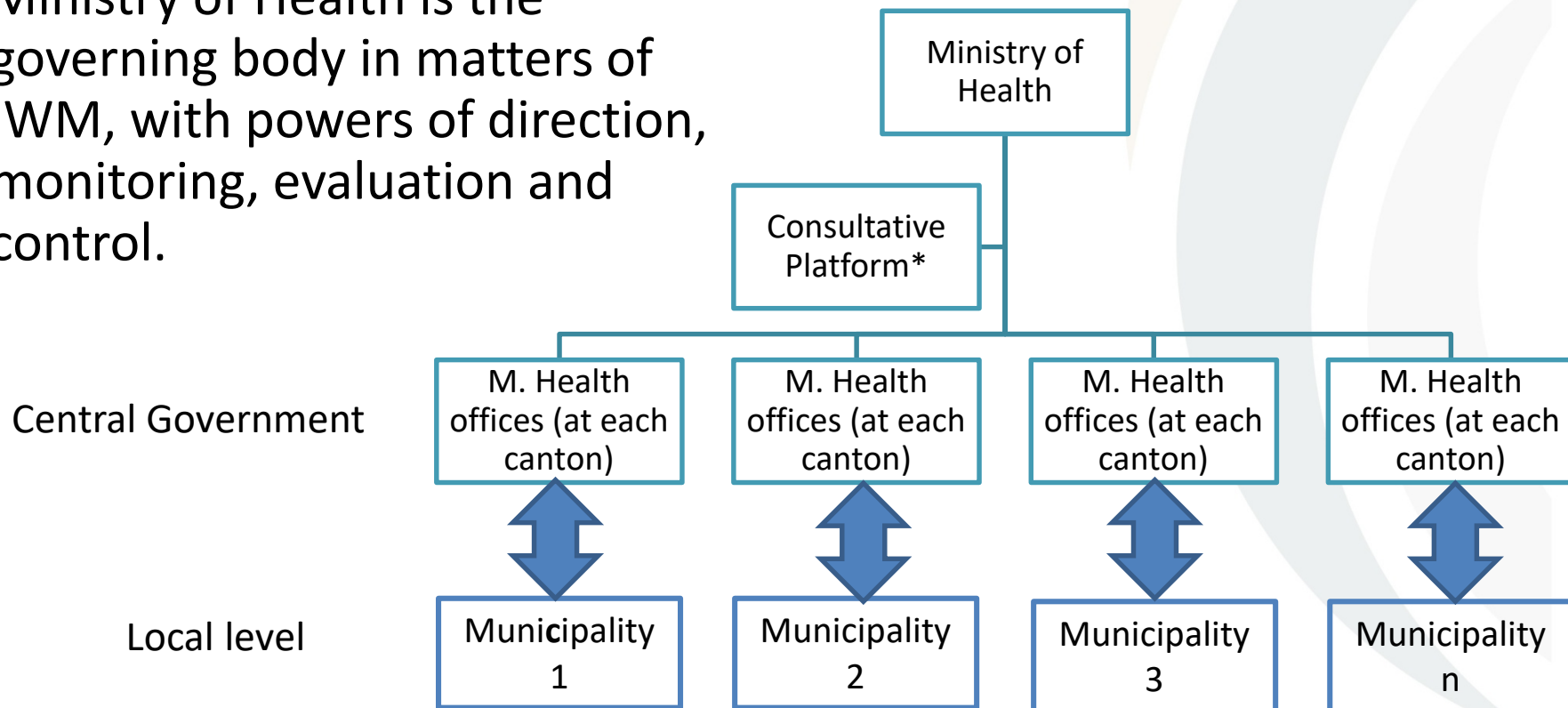
- The competent authorities and the municipalities have the obligation to inform the population about the risks and impacts to health and the environment associated with the integral management of waste. Likewise, the generators and waste managers will be obliged to inform the public authorities about the risks and impacts to health and the environment associated with waste.

Citizen participation

- The State, municipalities and other public institutions have the duty to guarantee and promote the right of all people to participate actively, consciously, informed and organized in the decision making and actions to protect and improve the environment.

Institutional Competencies

Ministry of Health is the governing body in matters of IWM, with powers of direction, monitoring, evaluation and control.



*Ministries of Health, Environment, Agriculture and Livestock, Public Education, Institute of Municipal Development and Advisory, the Municipalities represented by the National Union of Local Governments, Union of Chambers and Associations of Private Enterprise, National Council of Rectors (Academia), representative of the NGOs linked to waste management.

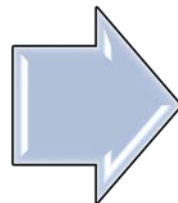
ARTICLE 8.- The municipalities will be responsible for the integral management of the waste generated in their canton; for this they must:

- a) Establish and apply the **municipal plan for IWM**
- b) **Dictate the regulations** in the canton for classification, selective collection and final disposal of waste.
- c) Promote the **creation of an environmental management unit**, under whose responsibility is the process of integral waste management, with its respective budget and personnel.
- d) **Guarantee that in its territory the waste collection service is provided** selectively, accessible, periodically and efficiently for all inhabitants, as well as material recovery centers, with special emphasis on those of small and medium scale.
- e) Provide **cleaning services** for ditches, sewers, roads, public spaces, rivers and beaches when appropriate, as well as sanitary management of dead animals on public roads.
- f) Prevent and **eliminate dumpsites** in the canton and the unauthorized collection of waste.
- g) Promote alternative systems for the **selective collection of recoverable waste** as containers or receivers, among others.

ARTICLE 8.- The municipalities will be responsible for the integral management of the waste generated in their canton; for this they must:

- h) **Set rates for waste management services** that include the costs to perform an integral management, in accordance with the municipal plan for IWM, this Law and its Regulations, and in proportion to the amount and the quality of the generated waste, ensuring the strengthening of the necessary infrastructure to provide said services and **guaranteeing its self-financing**.
- i) Coordinate compliance with this Law and its Regulations, the Policy and the National Plan and any other technical regulation on integral waste management within the municipality.
- j) Promote **training and educational awareness campaigns for the inhabitants** of the respective canton to promote a culture of separate collection, cleaning of public spaces and integral management of waste.
- k) **Establish agreements** with micro-enterprises, cooperatives, women's organizations and other organizations and / or local companies to participate in the waste management process, especially in communities located in rural areas.

The municipalities are **authorized to develop alternative technologies** for the treatment of waste, as long as they are less polluting.



Municipalities are **authorized to establish differentiated rates**, according to the type and amount of waste to those that separate at the source, or another form of tax incentive, which contributes in the canton to the integral management of waste.

Other topics covered by the law 8839

- Incentives
- National information system (data)
- National education program (IWM)
- Citizen participation
- Public procurement (sustainable public procurement to set the example for sustainable consumption)
- Licensing of waste managers
- Obligations of waste generators (particularly, to handle their waste only with authorized waste managers)
- Extended producer responsibility (or importer), to products to be designated by the Ministry of Health
- Infractions and offenses related to waste management (such as ilegal dumping of toxic waste)

Examples of other norms associated with law 8839

- Regulation for the Integral Management of Electronic Waste (Decree No. 35933-S, 2010)
- Regulation for the Final Disposition of medicines, raw materials and their waste (Decree No. 36039-S, 2010)
- Regulation of Recovery Centers (Decree No. 35906-S, 2010)
- Regulation on the management of ordinary solid waste (Decree No. 36093-S, 2010)
- General Regulation for the Classification and Management of Hazardous Waste (Decree No. 37788-S-MINAE, 2013)
- Methodology for Studies of Generation and Composition of Ordinary Solid Residues (Decree No. 37745-S, 2013)
- Regulation on Landfill (Decree No. 38928-S, 2015)
- Regulation on operating conditions and control of emissions from installations for co-incineration of ordinary solid waste (Decree No. 39136-S-MINAE, 2015)
- Regulation for the Management and Final Disposition of Sludges and Biosolids (Decree No. 39316-S, 2015)
- Regulation on Waste Tires (Decree No. 33745-S, 2007)

Municipios corren para realizar plan de residuos y salvar presupuesto de 2014

■ 26 ayuntamientos aún no cuentan con una propuesta para manejar sus residuos

CALIFICACIÓN:
☆☆☆☆☆

COMENTAR

0 COMENTARIOS



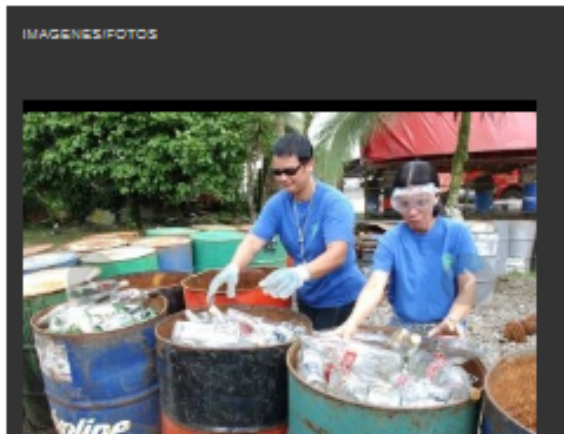
Me gusta

52

Twitter

ANDREA GONZÁLEZ M | andrea.gonzalez@nacion.com | 03:53 P.M. 22/05/2013

San José (Redacción). Veintiseis municipalidades enfrentan una carrera contra el tiempo pues carecen de un plan de manejo integral de residuos, con lo cual podrían quedar sin presupuesto para el año entrante.



De acuerdo con autoridades del Instituto de Fomento y Asesoría Municipal (IFAM) y el Ministerio de Salud, los ayuntamientos que para el 2014 no cuentan con una propuesta sobre el tratamiento de todos sus residuos corren riesgo de que la Contraloría General de la República no les apruebe el plan de gastos para ese año.

Olga Segura, de la dirección de Protección al Ambiente Humano del Ministerio de Salud, dijo que al tratarse de instituciones autónomas lo que se dan son recomendaciones, y que es la Contraloría, la que vigila

The importance of the Comptrollers bodies in the enforcement of the law

26, out of 81 municipalities in total, had no plan (and the approval of their budget for 2014 depended on complying their obligations, including having a municipal IWM plan, as the law 8839 indicates)

Examples of waste management companies that provide services in Costa Rica

Among many others, including recovery centers. Compliance with the law has driven the growth of this sector of the economy (if there is no demand, and legal security, there is no offer ...)



Ministerio de Salud

11 Jul 2017

Listado de gestores de residuos aprobados

En este espacio encontrará la información concerniente a las empresas registradas ante el Ministerio de Salud como gestores autorizados de residuos.

Para realizar una búsqueda ingrese cualquier criterio contenido en los encabezados de la tabla de búsqueda o de clic en el siguiente enlace para descargar el documento con la información completa sobre el Gestor:

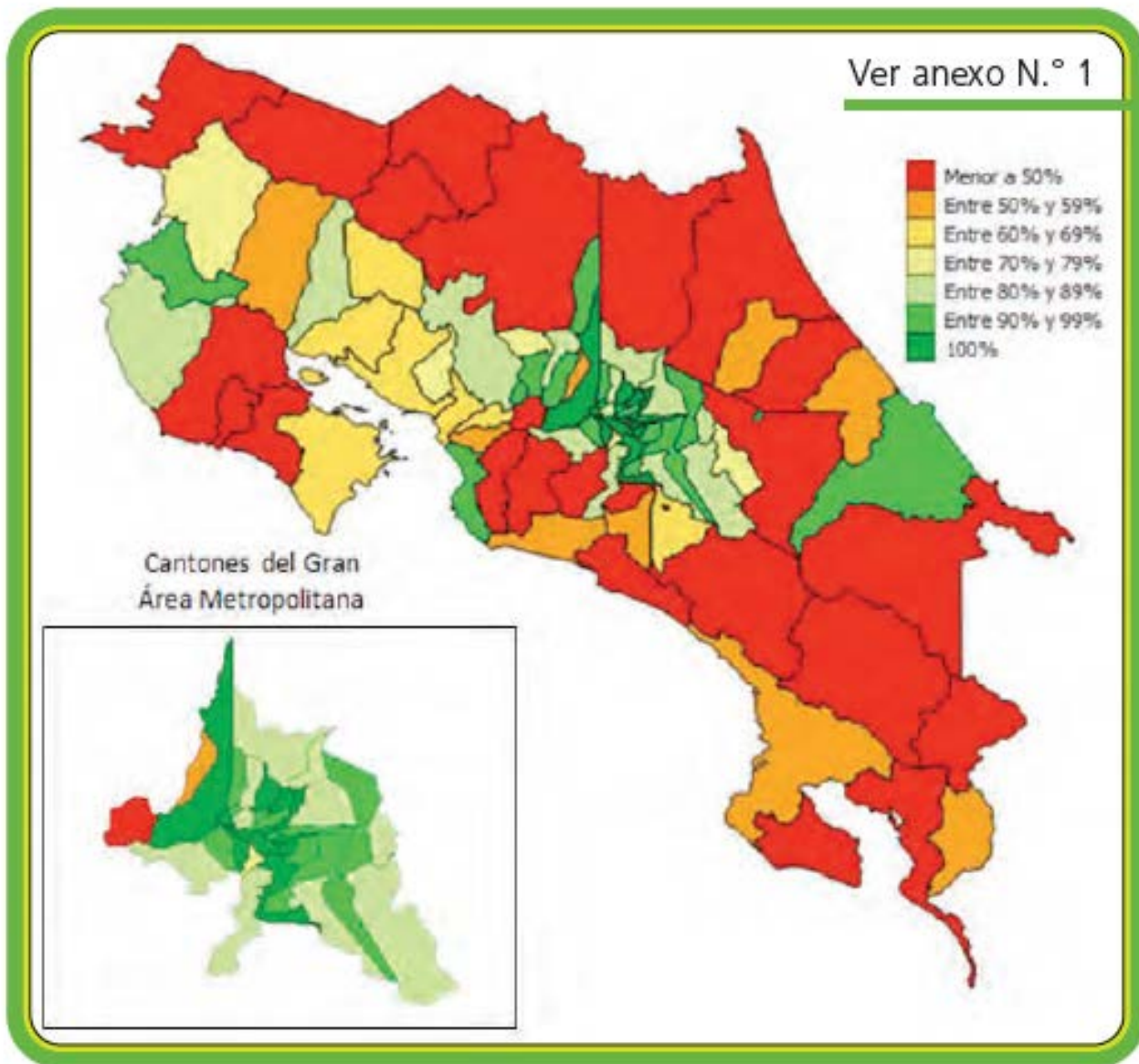
- Listado de gestores de residuos registrados al 30 de Junio del 2017

GESTOR	CANTÓN	REGISTRO	TELÉFONO	CORREO	VENCIAMIENTO
RECICLADORA LA CALMA S.A.	San José	DPAH-UASSAH-RGA-008-2013	2258-2971	info@lascalma.com	07 Nov. 2018
ELADIO SEGURA UREÑA	Aserri	DPAH-UASSAH-RGA-006-2013	2510-3718 fax: 2270-0590 8990-6240	servicioslavilla@hotmail	24 Oct. 2018
MANEJO INTEGRAL TECNOALMBIENTE	Miramar	DPAH-UASSAH-RGA-002-2014	2638-3758 2430-7428	info@tecnoambiente.com	13 Ene. 2018
EMPRESAS BERTHIER EBI DE COSTA RICA S.A.	San José Aserri	DPAH-UASSAH-RGA-005-2013	2232-7618	notificaciones@ebiar.com	24 Oct. 2019

242 registered waste managers as of June 2017

Sinergias para el Desarrollo Sostenible - Synergies for Sustainable Development

Mapa con los porcentajes que representan la cobertura del servicio de recolección de residuos por cantón (Período 2014)

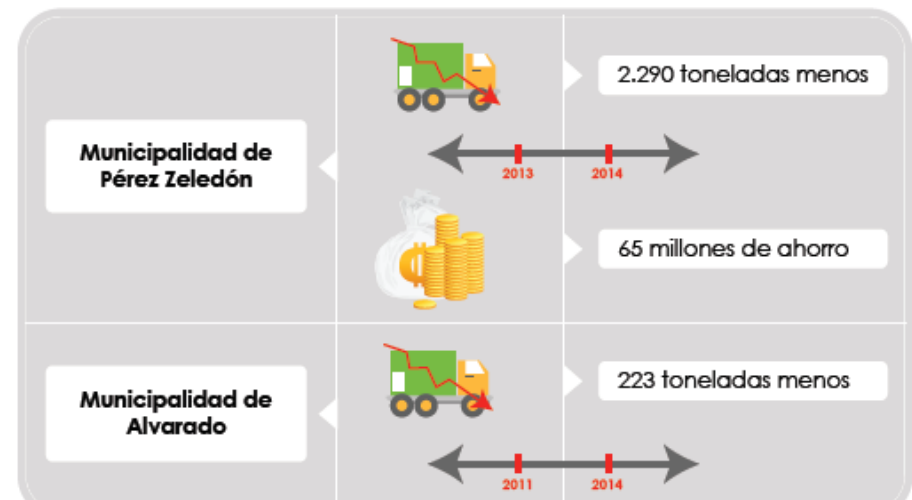


84% of homes have a waste collection service

Examples of findings by the National Comptroller Office (audit 2016)

- 14 municipalities (out of 81) still don't have a Waste Management Plan
- 28 municipalities have not updated the rate of the solid waste collection service for more than a year
- The average default (for the waste management service) in 81 municipalities was 40% in 2014.
- 30 municipalities presented a budget deficit in the service in 2014.
- Out of 55 revised plans, 17 did not identify targets for selective, accessible, periodic and efficient collection.
- 26 municipalities indicated to the Comptroller Body that the Cadastral Units do not identify all the users of the service or do not do so in a timely manner.
- Weak design of collection routes and poor state of the truck fleet
- Among others

Source: Informe de auditoría operativa de recolección de residuos sólidos, CGR (2016)





CLIMATE &
CLEAN AIR
COALITION
TO REDUCE SHORT-LIVED
CLIMATE POLLUTANTS

Thanks!

<http://ccacoalition.org/en>

<http://www.waste.ccacoalition.org/>

<http://ccacoalition.org/en/content/how-join>

Sylvia Aguilar
saguilar@cegesti.org



Sinergias para el Desarrollo Sostenible - Synergies for Sustainable Development

<https://www.facebook.com/redgirs/>